

# McLeod County Resource Directory: A Guide for Families and Professionals



**This publication is meant to serve as a guide to assist McLeod County professionals and families in accessing services for children.**

**No endorsement of service or quality is being implied or promoted by the sponsors.**

No endorsement of services is being implied or promoted.

**Update Form  
Original – Please Make Copies  
McLeod County Resource Directory  
Information**

Date: \_\_\_\_\_

Agency Name: \_\_\_\_\_

Address: \_\_\_\_\_

Phone: \_\_\_\_\_ Ext. \_\_\_\_\_ Fax: \_\_\_\_\_

Email Address: \_\_\_\_\_

Services Provided: (List briefly – If more space is needed, please use the back of this page)

Special Considerations: (Fees, Hours, Eligibility, After Hours Phone Number, etc.)

Name and Phone Number of Person Completing this Form: \_\_\_\_\_

Tari Niemeyer  
McLeod County Thrive Initiative/Ridgewater College  
2 Century Drive  
Hutchinson, MN 55350  
[tari.niemeyer@ridgewater.edu](mailto:tari.niemeyer@ridgewater.edu)

No endorsement of services is being implied or promoted.

## **Table of Contents**

<b>Early Childhood Learning.....</b>	<b>pages 4 – 8</b>
<b>Early Intervention.....</b>	<b>page 9</b>
<b>Parenting Education.....</b>	<b>pages 10 - 12</b>
<b>Schools.....</b>	<b>pages 13 - 14</b>
<b>Financial Education and Counseling.....</b>	<b>page 15</b>
<b>Hotline Numbers and Websites.....</b>	<b>pages 16 - 18</b>
<b>McLeod County Law Enforcement.....</b>	<b>page 19</b>
<b>Employment and Training.....</b>	<b>pages 20 - 22</b>
<b>Domestic Violence.....</b>	<b>page 23</b>
<b>Family Planning and Pregnancy Education.....</b>	<b>page 24-25</b>
<b>Clothing / Furniture &amp; Children’s Equipment.....</b>	<b>page 26</b>
<b>Food and Nutrition.....</b>	<b>pages 27 - 30</b>
<b>Transportation.....</b>	<b>page 31</b>
<b>Housing / Weatherization &amp; Energy Assistance. ....</b>	<b>32 - 33</b>
<b>Rental Properties.....</b>	<b>pages 34 - 39</b>
<b>Legal / Court Services.....</b>	<b>pages 40 - 42</b>
<b>Public Libraries.....</b>	<b>page 43</b>
<b>Medical Resources.....</b>	<b>pages 44 - 48</b>
<b>Medical Payment Programs.....</b>	<b>page 49</b>
<b>Dentists.....</b>	<b>pages 50 - 51</b>
<b>Dental Referrals.....</b>	<b>page 52</b>
<b>Chemical Dependency.....</b>	<b>pages 53 - 55</b>
<b>Mental Health and Counseling.....</b>	<b>pages 56 - 57</b>
<b>Support Groups.....</b>	<b>pages 58 - 61</b>
<b>Support Services.....</b>	<b>pages 62 - 63</b>
<b>Churches.....</b>	<b>pages 64 - 66</b>
<b>Camps.....</b>	<b>pages 67 - 70</b>
<b>Clubs.....</b>	<b>page 71</b>
<b>Early Intervention Universal Referral Form.....</b>	<b>pages 72-73</b>

## **Early Childhood Learning**

### **Glencoe**

#### **First Lutheran**

320-864-3317

#### **St. Pius X Preschool**

1103 10<sup>th</sup> St. E

Glencoe, MN 55336

320-864-3214

#### **Tri-Valley Migrant Head Start**

1828 Knight Avenue North

PO Box 274

Glencoe, MN 55336

320-864-6635

(Services offered mid-June through the end of October. Eligibility requirements apply)

#### **Wee Friends Creative Preschool**

First Congregational Church

PO Box 182

Glencoe, MN 55336

320-510-1811



### **Howard Lake – Waverly – Winsted**

#### **Howard Lake – Waverly – Winsted Education Preschool Program**

Provides stimulating social and educational experience to help children develop a positive attitude towards learning.

431 4<sup>th</sup> Street North

Winsted, MN 55395

320-485-2190

**Hutchinson**

**Hutchinson ABC Montessori School and Day Care**

504 E Highland Park Dr  
PO Box 476  
Hutchinson, MN 55350  
320-587-9214  
Hours: 7:00 a.m. – 6:00 p.m.

**Noah's Ark Preschool**

800 Bluff St NE  
Hutchinson, MN 55350  
320-587-3319

**King's Kids Preschool (Christ the King Church)**

Curriculum enhances emotional, social, spiritual, intellectual, and physical growth. Developing the Christian attitudes of loving, helping, and sharing.

1 day sessions – must be 3 years of age by 9/1 and potty trained  
2 & 3 day sessions must be 4 years of age by 9/1.

1040 South Grade Rd SW  
PO Box 369  
Hutchinson, MN 55350  
320-587-2776  
320-234-6233 (fax)

**Little Lambs (Peace Lutheran Church)**

400 Franklin St SW  
Hutchinson, MN 55350  
320-587-3031

**Kid's Depot (St. Anastasia)**

12 month child care program for ages 2 years  
9 months to 11 years, 11 months, 3 weeks,  
before and after school care for school age  
children.

Hours: 6:45 a.m. – 6:00 p.m.

400 Lake Street  
Hutchinson, MN 55350  
320-587-4760  
320-234-6756 (fax)  
Email: [akallhoff@stanastasia.net](mailto:akallhoff@stanastasia.net)



**Kids, Inc. Child Care Centers of Minnesota**

We provide quality child care for children ages 6 weeks – 11 years old. We have a clean, safe environment. We promote learning through a variety of play opportunities including field trips. We also offer preschool classes for children ages 3-5 years of age.

Hours: 5:45 a.m. – 7:15 p.m.

566 Bluff Street  
Hutchinson, MN 55350  
320-587-5437  
320-234-6358 (fax)  
Email: [kidsinc@hutchtel.net](mailto:kidsinc@hutchtel.net)

**Beans Plus Child Care Center at Ridgewater College**

Child care services for infants, toddlers, preschool, and school age children 6 weeks to 12 years old). We offer structured and leisure activities, special activities and attractions (entertainers, guests, field trips). Our overall purpose is to be a contributing factor in the development of the child's physical, intellectual, emotional and social growth to his/her greatest potential.

Hours: 6:00 a.m. – 6:30 p.m.

2 Century Ave SE  
Hutchinson, MN 55350  
320-234-0348  
320-587-9019 (fax)  
Email: [www.ridgewater.mnscu.edu](http://www.ridgewater.mnscu.edu)

267 4<sup>th</sup> Ave NW  
Hutchinson, MN 55350  
320-234-7212

**Lester Prairie**

**Little Learner**

P.O. Box 158  
Lester Prairie, MN 55354  
320-395-2909

**Kids Depot**

131 Hickory Street South  
Lester Prairie, MN 55354  
320-395-2909

**Winsted**

**Holy Trinity Tiny Trojans Preschool**

Provides a Christian Education whereby children will grow and develop spiritually, physically, emotionally, intellectually, and individually. Recognizes that all children are unique individuals, each requiring positive motivation and reinforcement in order that they may become an integrated person.

211 2<sup>nd</sup> St North  
PO Box 38  
Winsted, MN 55395-0038  
320-485-2314

**Early Childhood Family Education (ECFE)**

Weekly classes for children and parents together. The following list of numbers is where local coordinators can be reached:

Glencoe/Silver Lake  
405 16<sup>th</sup> Street East  
Glencoe, MN 55336  
320-864-2681

McLeod West Brownton Campus  
335 3<sup>rd</sup> St South  
Brownton, MN 55312  
320-328-5214

Hutchinson  
875 School Road SW  
Hutchinson, MN 55350  
320-587-8908

Howard Lake-Waverly-Winsted  
PO Box 708  
Howard Lake, MN 55349  
320-543-3600

Lester Prairie, MN 55354  
P.O. Box 158  
320-395-2909

**Heartland Community Action Agency, Inc.**

320-235-0850 or 800-992-1710

***Heartland Child Care Resource & Referral***

For parents: Free individualized child care referrals. Call (866)511-2244.

For child care providers:

\*Access to grants for training, program improvements and new program start-up.  
Call (800)292-5437

\* Training opportunities. Call (877)311-2244

\* Consultation and resource library. Call (800)221-1421

No endorsement of services is being implied or promoted.

**Head Start Programs**

Center Based: Classes meet 3-4 days each week during regular school hours. Breakfast, lunch and snack provided.

Home Based: Teachers visit home for 1 1/2 hours per week. Group activities offered twice a month.

Combination Option: Two center days per week and two home visits per month.

Health screening provided. Parent training and opportunities for parent involvement are available. Services vary by community. Income eligibility requirements.

Box 36  
Cosmos, MN 56228  
Phone: 320-235-0850 or 800-992-1710

- Glencoe 320-864-6469
- Hutchinson 320-234-6306

**Tri-Valley Migrant Head Start**

Services offered mid-June through the end of October. Children from 6 weeks to pre-school. Developmentally appropriate education program with family support and education.

Hours: 13 1/2 hours per day (June – August) and 9 1/2 hours in September  
No fees – Eligibility: Family must have made a significant move in the past 2 years to seek seasonal agricultural employment.

Box 274  
1828 Knight Avenue North  
Glencoe, MN 55336  
Phone: 320-864-6635



## **Early Intervention**

**Contact your local school district for the following services:**

**Early Intervention-**Families who have concerns about their child's development Birth through Pre-K should contact their school district: Hutchinson-320-234-2619; Glencoe/Silver Lake, McLeod West, Lester Prairie-320-510-2660; Winsted-320-963-7462 cell:320-2128209; Public Health-1-800-450-3185

**Early Childhood Screening:** Eligible children are 3 ½ to 5 years old. A screening, through the school system, is required of children before first grade.

**Early childhood Special Education (ECSE):** Eligible children are those who are determined to have a special need following testing conducted by the school district. Any guardian of a child from birth through age 6 may request an evaluation. The types of services which are needed by a child and the location where the services will be delivered are determined on a child by child basis. **See above Early Intervention for phone numbers.**

**School Readiness:** Children come weekly, independent of their parents. Aims of the preschool are socialization, developing an interest and joy in learning, making a successful transition between home to school, developing self expressions, self control, creativity and responsibility, following directions, being a good listener and communicator.

- |                               |              |
|-------------------------------|--------------|
| ○ Howard Lake/Waverly/Winsted | 320-543-3471 |
| ○ Hutchinson                  | 320-587-4470 |
| ○ Lester Prairie              | 320-395-2909 |
| ○ McLeod West/Brownton        | 320-328-5214 |
| ○ McLeod West/Stewart         | 320-562-2110 |

## **Parenting Education**

### **Early Childhood Family Education (ECFE)**

Classes for parent and children to attend together. Speakers, field trips, support groups, home visits, toy and book libraries, and special family events. Small registration fees for classes, financial scholarships available.

Phone numbers:

- Brownton 320-328-5214
- Glencoe/Silver Lake 320-864-2681
- Hutchinson 320-587-8908
- Lester Prairie 320-395-2521
- Stewart 320-562-2110
- Winsted 320-543-2190

### **Pioneer Library System:**

Phone numbers:

- Brownton 320-328-5900
- Glencoe 320-964-3919
- Hutchinson 320-587-8908
- Winsted 320-485-3909

### **Heartland Community Action Agency, Inc.**

218 Main Street South, Suite 108  
Hutchinson, MN 55350  
320-587-5244 or 800-829-2132

### **Head Start**

Parent training and opportunities for parent involvement provided.

### ***Self Sufficiency Program***

Provides individualized case management and assistance with goal-setting to achieve greater self-sufficiency.

101 Vesta Street S  
P.O. Box 36  
Cosmos, MN 56228  
320-235-0850 or 800-992-1710



**Info-U**

Information on parenting, child development, and a variety of other topics. Free brochure available.

University of Minnesota Extension Service – McLeod County  
840 Century Ave  
Hutchinson, MN 55350  
320-587-0770 or 800-587-0770  
320-234-4310 (fax)

**McLeod County Public Health**

Family Home Visitor program, in-home parenting skills, support, and referral to additional services. Maternal Child Health home visits to expectant and new parents. No charge to families in McLeod County who have children pre-birth to 5 years of age.

**Phone numbers:**

- Brownton/Glencoe/Silver Lake 320-864-3185
- Hutchinson 320-587-4680
- Stewart 320-328-4413
- Winsted 320-395-2568

**TEPP (Too Early Pregnancy Prevention Program)**

Sexual health video lending library. Presentations to teens and parents on values, self esteem, communication skills, healthy sexuality, decision making, relationship skills, teen pregnancy, and parenting. No fee.

**Phone numbers:**

- Brownton/Glencoe/Silver Lake 320-864-3185
- Hutchinson 320-587-4680
- Stewart 320-328-4413
- Winsted 320-395-2568

**Project Harmony**

Project Harmony is a program of Meeker-McLeod-Sibley Community Health Services (CHS). In January of 2006 they were awarded a grant through the Minnesota Organization on Fetal Alcohol Syndrome (MOFAS). Goals and objectives for this grant include coordinating education and providing services of prevention, intervention, and support concerning Fetal Alcohol Spectrum Disorders (FASD).

For more information:

[www.mmspublichealth.org](http://www.mmspublichealth.org)

Phone number: 320-510-1449

**McLeod Social Service Center**

In-home parent education and support. Services to minor parents. Parenting resources. Free of charge to all eligible families.

1805 Ford Ave N, Suite 200  
Glencoe, MN 55336

**Phone Numbers:**

- Glencoe 320-864-3144
- Hutchinson 320-587-9533
- Stewart and Winsted 800-247-1756

**Parent Connection**

Parent support group with trained facilitators and a structured child care program. No charge. Monday evenings 6:30-8:00 p.m. for parents of children zero to preteen, 8:00-9:30 p.m. for parents of adolescents. For further information, call 320-587-8639.

Meets at: Christ the King Lutheran Church  
1040 South Grade Road SW  
Hutchinson, MN 55350  
320-587-8639

**University of Minnesota Extension Service**

Research based information that connects community needs with University resources. Including information on adolescent issues, school age development, and parenting resources.

840 Century Avenue  
Hutchinson, MN 55350-3754  
320-587-0770 or 800-587-0770  
[mcleod@extension.umn.edu](mailto:mcleod@extension.umn.edu)  
320-234-4310 (fax)



## **Schools**

**An “E” indicates early childhood programs are available at the site.**

### **Public**

#### **Area Learning Centers**

Alternative high school program

Eligibility: Out of school 90 days or with a waiver. Check with your local high school counselor.

#### **Willmar Service Center**

Special Education Cooperative servicing students birth – 21 in the following school districts within McLeod County. Glencoe / Silver Lake, McLeod West and Lester Prairie.

320-231-5184

#### **Cultivating Excellence – GSL Schools**

Summer school enrichment for migrant students. Grades 1-12 are served. Free meals (3) for any child under 18 are provided.

1621 East 16<sup>th</sup> Street

Glencoe, MN 55336

320-864-2666

320-864-2475 (fax)

#### **Glencoe/Silver Lake**

Superintendent’s Office (Lincoln School (7 & 8) 320-864-2498

High School Office (9-12) 320-864-2400

Helen Baker Elementary (E-2) 320-864-2666

Lakeside (3-6) 320-864-2500

Early Intervention 320-510-2660

#### **Howard Lake/Waverly/Winsted**

Superintendent’s Office 320-543-3521

High School (7-12) 320-543-3471

Elementary (Howard Lake: K-3) 320-543-3501

Elementary (Waverly: 4-6) 763-658-4633

Elementary (Winsted: Preschool-3) 320-485-2190

Early Intervention 320-212-8209

#### **Hutchinson**

Superintendent’s Office 320-587-2860

High School (9-12) 320-587-2151

Middle School (6-8) 320-587-2854

No endorsement of services is being implied or promoted.

Park Elementary (2-5)	320-587-2837
West Elementary School (E-1)	320-587-4470
New Discoveries Montessori Academy	320-234-6362
New Century Charter School	320-234-3660
Agape Christian Academy	320-587-9443
Early Intervention	320-234-2619

**Lester Prairie**

High School (7-12)	320-395-2521
Elementary School (K-6)	320-395-2909
Early Intervention	320-510-2660

**McLeod West**

Brownton Campus (E-12)	320-328-5214
Early Intervention	320-510-2660

**Private Schools**

**Glencoe**

First Ev. Lutheran (E-8)	320-864-3317
St. Pius X	320-864-3214

**Hutchinson**

Hutchinson Seventh Day Adventist (K-8)	320-234-5994
Immanuel Lutheran (K-8)	320-587-4858
Maplewood Academy (9-12)	320-587-2830
Our Savior's Lutheran (K-6)	320-587-3318
St. Anastasia (K-6)	320-587-2490
St. John's Lutheran	320-587-3851

**Silver Lake**

Holy Family Catholic School (PK – 6)	320-327-2356
--------------------------------------	--------------

**Winsted**

Holy Trinity Elementary	320-485-2314
Holy Trinity High School	320-485-2182

**Post-Secondary**

Ridgewater College (Campuses in Hutchinson and Willmar)  
Liberal Arts and Technical Degrees, self-paced learning  
options available, financial aid, customized and continuing  
education, Minnesota Career Information System (MCIS),  
DISCOVER, Connections Center, Adult Basic Education, GED,  
ESL, post-secondary options.

Hutchinson and Willmar Campuses  
320-234-8500 or 800-722-1151



No endorsement of services is being implied or promoted.

## **Financial Education and Counseling**

### **Consumer Credit Counseling Service (CCCS)**

CCCS works with individuals and families to establish budgets and debt repayment plans for financial wellness.

[www.lssmn.org/debt](http://www.lssmn.org/debt)

### **University of Minnesota Extension Service – McLeod County**

Provide group and one-to-one educational programs and assistance on money management, budgeting, credit and debt management, farm financial and business management for individuals and families.

840 Century Avenue  
Hutchinson, MN 55350  
320-587-0770 or 800-587-0770  
[Mnext-mcleod@umn.edu](mailto:Mnext-mcleod@umn.edu)  
320-234-4310 (fax)

## Hotline Numbers and Websites

AIDS

Minnesota Aids Hotline.....	800-248-2437
Spanish Aids Hotline.....	800-344-7432
○ <a href="http://www.aidshotline.org">www.aidshotline.org</a>	
Alcohol / Drug Referral Service.....	800-729-6686
○ <a href="http://www.addictionnomore.com">www.addictionnomore.com</a>	
Arson Hotline.....	800-723-2020
○ <a href="http://www.fire.state.mn.us">www.fire.state.mn.us</a>	
Cancer Hotline.....	800-227-2345
○ <a href="http://cancerhotline.com">cancerhotline.com</a>	
Center for Disease Control.....	800-232-4636
○ <a href="http://www.cdc.gov">www.cdc.gov</a>	
Child Abuse and Neglect Hotline.....	800-422-4453
○ <a href="http://www.findcounseling.com/journal/child-abuse/child-abuse-hotlines-phone-numbers.html">www.findcounseling.com/journal/child-abuse/child-abuse-hotlines-phone-numbers.html</a>	
Consumer Product Safety Commission.....	800-638-2772
○ <a href="http://www.cpsc.gov">www.cpsc.gov</a>	
Depression and Anxiety 24-hour Helpline.....	800-234-0038
Drug Information Service.....	800-782-1875
○ <a href="http://www.minnesotahhealthinfo.org/stay/alcohol.html">www.minnesotahhealthinfo.org/stay/alcohol.html</a>	
Emergency 24-hour Mental Health Helpline.....	320-587-5502
(Hutchinson Area Health Care – may call collect)	
Family Planning / STD Hotline.....	800-783-2287
○ <a href="http://www.stdhotline.state.mn.us">www.stdhotline.state.mn.us</a>	
Federal Emergency Management Agency (FEMA).....	800-462-9029
○ <a href="http://www.fema.gov">www.fema.gov</a>	
First Call for Help Southwest (United Way 211).....	800-543-7709
○ <a href="http://211.org">211.org</a>	
Food Safety (Meat and Poultry) USDA.....	800-535-4555
○ <a href="http://www.fsis.usda.gov">www.fsis.usda.gov</a>	

No endorsement of services is being implied or promoted.



Gambling Hotline.....	800-437-3641
○ <a href="http://www.miph.org/gambling">www.miph.org/gambling</a>	
Gay and Lesbian Community Action Council (Out Front Minnesota)	800-800-0350
○ <a href="http://www.outfrontmn.org">www.outfrontmn.org</a>	
Heartland Community Action Agency Inc.....	800-829-2132
Or.....	800-992-1710
○ <a href="http://www.heartlandcaa.org">www.heartlandcaa.org</a>	
Help for Families with Education Questions.....	888-234-4939
(advocacy for child’s education in English and Spanish)	
Housing Discrimination.....	800-669-9777
○ <a href="http://www.hud.gov/complaints/housediscrim.cfm">www.hud.gov/complaints/housediscrim.cfm</a>	
Immunization Hotline.....	800-232-4636
○ <a href="http://www.cdc.gov/vaccines/about/contact/default.htm">www.cdc.gov/vaccines/about/contact/default.htm</a>	
Lawyer Referral Service (MN Bar Association).....	800-292-4152
○ <a href="http://www.mnfindalawyer.com">www.mnfindalawyer.com</a>	
McLeod Alliance for Victims of Domestic Violence.....	800-934-0851
○ <a href="http://www.mcleodalliance.org">www.mcleodalliance.org</a>	
National Center for Missing and Exploited Children.....	800-843-5678
○ <a href="http://www.missingkids.com">www.missingkids.com</a>	
National information Center for Children with Disabilities.....	800-695-0285
○ <a href="http://www.nichcy.org">www.nichcy.org</a>	
National Runaway Hotline.....	800-621-4000
○ <a href="http://www.1800runaway.org">www.1800runaway.org</a>	
National STD Hotline (American Social Health Association) .....	800-227-8922
○ <a href="http://www.ashastd.org">www.ashastd.org</a>	
Pesticide Spills (Minnesota Duty Officer).....	800-422-0798
○ <a href="http://www.mda.state.mn.us">www.mda.state.mn.us</a>	
Poison Control.....	800-222-1222
○ <a href="http://www.poison.org">www.poison.org</a>	
Positive Link (HIV Positive Peer Support and Project AIDS hotline).	800-248-2437
○ <a href="http://www.positivelink.org">www.positivelink.org</a>	
Road Information (511).....	800-542-0220
○ <a href="http://www.511mn.org">www.511mn.org</a>	

No endorsement of services is being implied or promoted.

Safe Drinking Water Hotline.....	800-426-4791
○ <a href="http://www.epa.gov/safewater/dwinfo/mn.htm">www.epa.gov/safewater/dwinfo/mn.htm</a>	
Social Security Administration.....	800-772-1213
○ <a href="http://www.socialsecurity.gov">www.socialsecurity.gov</a>	
Suicide Prevention Hotline.....	800-273-8255
○ <a href="http://www.suicidepreventionlifeline.org">www.suicidepreventionlifeline.org</a>	
University of Minnesota Extension Services and Info-U.....	800-587-0770
○ <a href="http://www.extension.umn.edu">www.extension.umn.edu</a>	

## **McLeod County Law Enforcement Numbers**

For all **emergency** situations (fire, police, and ambulance) call: **911**

For all non-emergencies, call the police department at:

- Brownton 320-328-5266 or 320-864-3134 (after hours)
- Glencoe 320-864-5171, 320-864-6868 (fax)
- Hutchinson 320-587-2242
- Lester Prairie 320-864-3134
- Plato 320-864-3134
- Silver Lake 320-864-3134
- Stewart 320-562-2133, 320-562-2518 (fax)
- Winsted 320-485-2600
- TDD/TTY (all) 320-864-6493
- Sheriff 320-864-3134, 320-864-5920 (fax)

(Emergency help from McLeod County Social Services can be accessed through the Sheriff's Office during non-office hours)

### **MN Dept. of Corrections**

722 11th St. E.  
Glencoe, MN 55336  
320-864-5591

## **Employment and Training**

### **Glencoe Area Adult Basic Education**

Assistance is available for GED, High School Diploma or English as a second language (ESL).

Basic Skills and GED, 864-2690  
ESL, 864-6635

### **Adult Basic Education**

Ridgewater College (north end)  
2 Century Avenue  
Hutchinson, MN 55350  
234-234-8507

### **Hubert H. Humphrey Job Corps Center**

Jobs, training and living expenses can be provided for ages 14 – 24.

1480 N. Snelling Avenue  
St. Paul, MN 55108  
651-642-1133  
800-934-5627

### **Job Service / Work Force Center / Minnesota Department of Economic Security**

Computer job bank, unemployment benefits, hiring assistance for employers, labor market information, job search workshops.

Ridgewater College (south end)  
2 Century Avenue  
Hutchinson, MN 55350  
320-587-4740

### **Central Minnesota Jobs and Training Services**

Training for full-time jobs, interest testing, on the job training, classroom training, resource referral, job seeking assistance. See contact numbers for each program. Main programs for employment and job training are:

*Adult Job Training Program Act:* Income eligible for adults 22 years and up.  
800-284-7425 for appt.: assessments, classes job training, placement, resumes, referrals.

*Older Worker Program:* Income eligible for those age 55 and over who are interested in job training and or working in a job 20 hour or more per week, 800-284-7425

*MN Family Investment Program (MFIP):* Only through Public Assistance Programs referral. Assistance in education and job placement services to exit Public Assistance. Check with your Financial Worker at Social Services for a referral, 32-587-4740 or 800-284-7425.

*Technical College Consortium Training for College Students:* WIA Specialist with the Ridgewater College assists in school program completion and with funds for unmet needs for full-time students in accredited college programs when eligible by layoff status or income guidelines, 320-587-4740 or 800-284-7425.

*Summer Youth Programs:* Jobs for income eligible youth ages 14 – 21, 800-284-7425.

Workforce Center (Ridgewater College)  
2 Century Avenue  
Hutchinson, MN 55350  
320-587-4740  
800-284-7425  
320-234-7769 (fax)

**Ridgewater College (Campuses in Hutchinson and Willmar)**

Liberal Arts and Technical Degrees, self-paced learning options available, financial aid, customized and continuing education, Minnesota Career Information System (MCIS), DISCOVER, Connections Center, Adult Basic Education, GED, ESL, post-secondary options.

Hutchinson and Willmar Campuses  
320-234-8500 or 800-722-1151

*Small Business Management College Program (tuition cost)*

Assistance in business planning, start-up, development, marketing, and loan information.

Ridgewater College  
2 Century Avenue  
Hutchinson, MN 55350  
320-234-0251

**West Central Industries (WCI)**

Opportunities in facility based employment, supported employment and job training, placement and rehabilitation for individuals with disabilities.

900 Highway 15 South  
Hutchinson, MN 55350  
320-234-7515

**Women in the Trades: Minnesota Women's Building**

Mentors, advocacy, outreach, employment hotline and information.

550 Rice Street  
St. Paul, MN 55103  
651-228-0338

**Women Venture: A Center for Career and Economic Development**

Assistance in business planning, start-up development, marketing, and loan information.

2324 University Ave.  
St. Paul, MN 55114  
651-646-3808

**Work Force Center / Minnesota Department of Economic Security**

*Rehabilitation Services*

Vocational services for persons with disabilities. Services include: employment counseling, training, assistance in finding and maintaining employment and assistive technology.

Ridgewater College (south end)  
2 Century Avenue  
Hutchinson, MN 55350  
320-587-4740

## **Domestic Violence**

### **McLeod Alliance for Victims of Domestic Violence**

General and legal advocacy, safety planning, transportation, 24-hour crisis line, temporary shelter, support group, books and videos, community education on domestic violence and information on medical, legal, and financial assistance. Adult male and female victims of domestic violence. Hispanic Outreach Worker available.

PO Box 393  
Hutchinson, MN 55350  
Phone: 320-234-7933, 800-934-0851  
Fax: 320-234-6317

CRISIS LINE: 320-234-7933 or 800-934-0851

Email: [advocate@hutchtel.net](mailto:advocate@hutchtel.net)

### **McLeod County Court Administrator**

Assistance with obtaining an “Order for Protection”.

McLeod County Courthouse  
830 11<sup>th</sup> Street East  
Glencoe, MN 55336

#### Phone Numbers:

- Glencoe: 320-864-5551
- Hutchinson: 320-587-4680
- Stewart: 320-328-4413
- Winsted: 320-395-2568

### **Shelter House**

Temporary housing for victims of domestic violence and their children, referral for battered men.

C/O Woodland Centers  
Willmar, MN 56201  
Phone: 800-992-1716

## **Family Planning and Pregnancy Education**

### **Birthright of Hutchinson**

Confidential free pregnancy testing

41 2<sup>nd</sup> Ave. SW  
Hutchinson, MN 55350  
320-587-5433 (24 hours)

### **Glencoe Area Health Center**

Prenatal Classes

Best Beginnings 24-hour Hotline (for new moms and moms to be)

320-864-3121  
705 East 18<sup>th</sup> Street  
Glencoe, MN 55336  
320-864-3121  
320-864-4876 (fax)

### **Hutchinson Area Health Care**

Childbirth classes for expectant parents.

1095 Highway 15 South  
Hutchinson, MN 55350  
320-234-5081  
320-234-4667 (fax)

### **LaLeche League of McLeod County**

Counseling, support and trouble shooting for pregnant or breastfeeding mothers.  
Lending Library – books on breastfeeding, nutrition, parenting, weaning and special circumstances. Monthly meetings.

1315 East 14<sup>th</sup> Street  
Glencoe, MN 55336  
320-864-4046

### **March of Dimes Birth Defects Foundation**

Education materials and videos. Babies and You (work place presentation). Grants for groups promoting healthy babies.

2233 Roosevelt Road, Suite 11  
St. Cloud, MN 56301  
320-252-1156  
320-252-9647



**McLeod County Public Health**  
1805 Ford Avenue N, Suite 200  
Glencoe, MN 55336

Phone numbers:

- Glencoe 320-864-3185
- Hutchinson 320-587-4680
- Lester Prairie/Winsted 320-395-2568
- Stewart 320-328-4413

*Family Planning*

Low cost comprehensive birth control services including counseling, physical exams, STD testing and birth control methods.

*Follow Along Program*

Follows children birth through 3 years through parental questionnaires to ensure appropriate developmental growth and to refer children to appropriate resources.

*Home Visiting*

Provides assessment of family functioning, stress and risk factors. Early identification and intervention. Para-professional (mentor) to work with the family under supervision of a Public Health Nurse.

*Improved Pregnancy Outcome*

Visits to high risk pregnant women for prenatal care and education, pre-term birth prevention education and service coordination. No charge.

*New Baby Visits*

All new parents are contacted by a Public Health Nurse to answer questions, provide education, information and support.

*Pregnancy Testing*

No cost pregnancy testing for any woman living in McLeod County.

*SIDS (Sudden Infant Death Syndrome)*

Consultation and Home Visit. Provide grief support and referral services for families who have experienced the loss of a child.

*WIC (Women, Infants and Children Program)*

A nutrition education and supplemental program designed to promote healthy pregnancy outcomes and proper nutrition for children up to age five.

*Project Harmony*

Case management services for pregnant women who use alcohol and/or drugs. No fee.

No endorsement of services is being implied or promoted.

## **Clothing / Furniture/ Children's Equipment**

### **Hutchinson Area Health Care Auxiliary Thrift Shop**

25 Main Street North  
Hutchinson, MN 55350  
Hours: Monday – Saturday, 9 a.m. – 5:00 p.m.  
320-587-8434

### **Maplewood Academy – Twice is Nice**

Free and reduced clothing, thrift shop.  
700 Main Street North  
Hutchinson, MN 55350  
(located in the Community Service Building)  
320-587-8277  
Hours: Tuesday and Thursday 1:00 p.m. – 4:00 p.m., call for times to obtain free clothing. Drop off site open from 9:00 a.m. Sunday to 4:00 p.m. on Tuesday.

### **Mary's Wish**

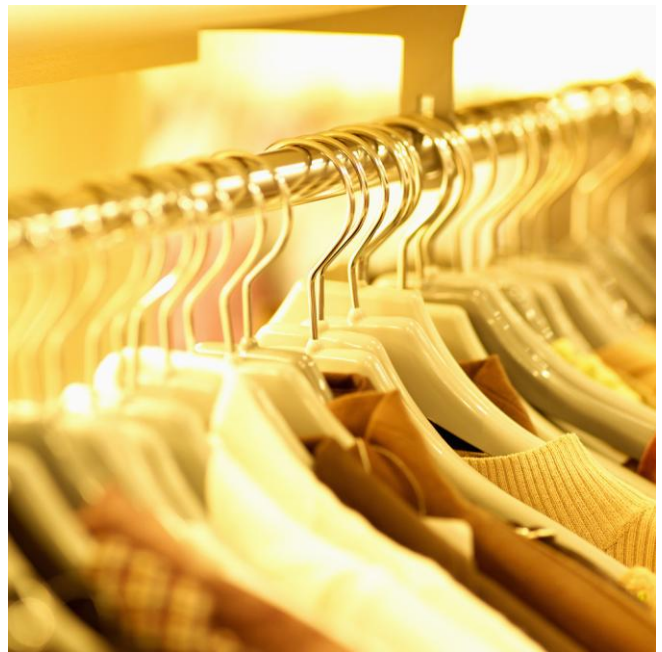
12 E. 8<sup>th</sup> Street  
Waconia, MN  
612-751-2207

### **Worn-a-Bit Shop**

221 2<sup>nd</sup> Street North  
Po Box 446  
Winsted, MN 55395  
No Phone  
(Holy Trinity Convent Building, downstairs,  
same entrance as Trojan Preschool)  
Hours: Wednesday and Friday  
12:30 p.m. – 4:30 p.m.

### **Care Connection**

1114 Hennepin Ave North  
Glencoe, MN 55336



## **Food and Nutrition**

### **Nutrition Education Program**

A free nutrition education program for families receiving or eligible for food stamps. Program assists families or individuals in learning more about nutrition and budgeting.

University of Minnesota Extension Service – McLeod County  
840 Century Avenue  
Hutchinson, MN 55350  
320-587-0770  
800-587-0770  
320-234-4310 (fax)  
e-mail: [mcleod@extension.umn.edu](mailto:mcleod@extension.umn.edu)

### **Fare Share Program**

Low cost food packages in exchange for a small fee and two hours of volunteer service monthly. There are several different food packages available. Pay \$18 and volunteer to receive food package worth \$40 - \$45. Must be ordered 1 month ahead for pick up once a month.

Contact: Carol Brown (Hutchinson) 320-587-8454  
Mary Ann Forcier (Glencoe) 320-864-4780

### **Food Shelf**

Provides emergency food and resources for McLeod County residents.  
Contact: Marietta Neumann

105 2<sup>nd</sup> Avenue SW  
Hutchinson, MN 55350  
320-587-4796  
Or  
808 East 12<sup>th</sup> Street  
Glencoe, MN 55336  
320-864-2088  
Hours: Monday – Friday, 9:00 a.m. – 12:00 p.m.  
e-mail: [marietta@hutchtel.net](mailto:marietta@hutchtel.net)



**Food Stamps**

Must be financially eligible.

McLeod Social Service Center  
1805 Ford Avenue North  
Glencoe, MN 55336  
320-864-2144 (Glencoe)  
320-587-9533 (Hutchinson)  
800-247-1756 (Stewart and Winsted)

**MAC- Mothers and children**

**NAPS- Nutrition Assistance Program for Seniors**

The MAC Program is for children until their 6<sup>th</sup> birthday that do not qualify for WIC and post-partum Moms for a year after the child's birth that meet income requirements. The NAPS Program is for people 60 years of age or older that meet the income requirements.

The food is distributed on the 2<sup>nd</sup> Tuesday (after the first full week of the month from 1:45 p.m. – 2:45 p.m. at the Glencoe Site of the McLeod Emergency Food Shelf. The Food Shelf is located at:

808 E. 12<sup>th</sup> Street  
Glencoe, MN 55336  
To register, call 1-800-365-0270

**Meals on Wheels**

Delivers hot meals. Provides nutrition education. Eligibility guidelines apply.

Brownton Community Center  
310 Second Street North  
Brownton, MN 55312  
320-328-4181

Community Building Auditorium  
West Main Street  
Silver Lake, MN 55381  
320-327-2621

Millie Beneke Manor  
1319 Greeley Avenue  
Glencoe, MN 55336  
320-864-5728

Community Center  
551 Prior Street  
Stewart, MN 55385  
320-562-2730

Hutchinson Area Health Care  
1095 Highway 15 South  
Hutchinson, MN 55350  
320-234-4642  
320-234-4707 (fax)

**Midwest Farm Worker Employment and Training**

Provides food vouchers to migrant farm workers in need who are eligible for other programs.

620 Litchfield Avenue SW  
Willmar, MN 56201

**Senior Dining**

Congregate noon meal, fellowship and entertainment. Must be 60 years of age or older or have a disability.

Brownton Nutrition Center  
120 4<sup>th</sup> Avenue North  
Brownton, MN 55312  
320-325-4181

Glencoe Nutrition for Elderly  
1319 Greeley Avenue  
Glencoe, MN 55336  
320-864-5728

Hutchinson Senior Activity Center  
Evergreen Apartments Site  
115 Jefferson Street South  
Hutchinson, MN 55350  
320-587-6564

Silver Lake Congregate Meal Site  
Community Building Auditorium  
West Main Street  
Silver Lake, MN 55381  
320-327-2621

Stewart Congregate Meal Site  
Stewart Community Center  
551 Prior Street  
Stewart, MN 55385  
320-562-2730

Winsted Dining Site  
American Legion Club  
161 1<sup>st</sup> Street North  
Winsted, MN 55395

**Salvation Army**

Emergency assistance with food, shelter and transportation. Must have been referred by Social Services or Food Shelf for shelter and food. Accessed through the following Police Departments.

Glencoe Police Department  
911 Greeley Avenue  
Glencoe, MN 55336  
320-864-5171  
320-864-6868 (fax)

Hutchinson Police Department  
10 Franklin Street SW  
Hutchinson, MN 55350  
320-587-2242  
320-587-2677 (fax)

**WIC (Women, Infants and Children)**

Nutrition education and food vouchers for pregnant women, breast feeding women and children birth to age 5. Vouchers for: formula, milk, cheese, cereal, juice and eggs. Eligibility guidelines apply.

McLeod County Public Health

1805 Ford Avenue, Suite 200

Glencoe, MN 55336

320-864-3185 (Brownton, Glencoe and Silver Lake)

320-587-4680 (Hutchinson)

320-328-4413 (Stewart)

320-395-2568 (Winsted)

## **Transportation**

### **Clinic Cab**

Howard Lake, MN  
800-962-3705

### **Hutchinson Taxi**

595 Jefferson Street  
Hutchinson, MN 55350  
320-587-7878

### **McLeod County Veterans Service**

Transportation for veterans and their spouses to area VA hospitals. No set schedule. Call for appointment. No charge.

320-864-5551 (Glencoe)  
320-328-4413 (Stewart)

320-587-4680 (Hutchinson)  
320-395-2568 (Winsted)

### **McLeod Social Service Center**

Provides rides for eligible county residents for medical appointments or other related social services.

320-864- 3144 (Glencoe)  
320-587 -9533 (Hutchinson)  
800-247-1756 (Stewart and Winsted)

### **Tri-County Taxi**

3277 80<sup>th</sup> Street, SW  
Waverly, MN  
763-658-4069

### **Trailblazer Transit**

Almost everyone can ride – NO age restrictions. Fare is the same for everyone. No discounts. Fare is based on a 1 way ride. Fares start at \$1.50. All buses are equipped with a lift.

Hours: 7:00 a.m. – 5:00 p.m.  
McLeod County Residents use Hutchinson Dispatch  
320-587-4757  
1-877-743-3828

## **Housing/Weatherization and Energy Assistance**

### **Crow River Habitat for Humanity**

Build homes with and for low income families. Eligibility: Income for zero-interest mortgage, but not eligible for conventional mortgage. Must apply and qualify.

305 Main Street South, Suite 107

Hutchinson, MN 55350

320-587-8868

e-mail: [crhfh@hutchtel.net](mailto:crhfh@hutchtel.net)

Hours: 9:00 a.m. – 1:00 p.m. Monday – Thursday

Friday by appointment only

### **Heartland Community Action Agency, Inc.**

*Energy Assistance Program (EAP)*

This program may help pay heating bills, make emergency home repair, and provide crisis assistance to income eligible persons. Waiting list may apply.

### *Home Weatherization Grants*

This program provides grants to low income homeowners and renters to make energy conservation improvements and repair or replace furnaces. Waiting list may apply.

### *Housing / Rental*

This program provides housing rehabilitation loans, rental assistance, and transitional housing. Waiting list may apply.

218 Main Street South

Hutchinson, MN 55350

320-587-5244

800-829-2132

320-587-2677 (fax)

### **Hutchinson HRA**

The Hutchinson HRA offers a number of housing programs to promote decent, safe and affordable housing within the community of Hutchinson. Some programs are also available in the surrounding areas of Hutchinson.

Hutchinson City Center

111 Hassan Street SE

Hutchinson, MN 55350

320-234-4235

fax 320-234-4240



**Minnesota Housing Administer Finance Agency**

Rehabilitation and revolving loans offered for home improvements. Must be income eligible to qualify. Hutchinson Housing and Redevelopment Authority City Center.

111 Hassan Street SE  
Hutchinson, MN 55350  
320-234-4251  
320-234-4240 (fax)  
Contact: Judy Flemming  
e-mail: [jflemming@ci.hutchinson.mn.us](mailto:jflemming@ci.hutchinson.mn.us)

**McLeod Social Services Center**

Provides immediate mortgage, rent, or utility payments for the current month in crisis situations. Eligibility guidelines apply.

1805 Ford Ave. North  
Glencoe, MN 55336  
320-864-3144 (Glencoe)  
320-587-9533 (Hutchinson)  
800-247-1756 (Stewart and Winsted)

**Salvation Army**

Emergency Assistance with food, shelter, and transportation. Must be referred by Social Services or Food Shelf for shelter and food. Accessed through Police Departments.

Glencoe Police Department  
911 Greeley Avenue  
Glencoe, MN 55336  
320-864-5171  
320-864-6868 (fax)

Hutchinson Police Department  
10 Franklin Street SW  
Hutchinson, MN 55350  
320-587-2242  
320-587-2677 (fax)

## **Rental Properties**

### **Brownton**

#### **McLeod HRA Townhomes**

644 3<sup>rd</sup> St N (4 Units)  
730 3<sup>rd</sup> St N (4 Units)  
Brownton, MN 55312  
Contact: Jill Bengtson  
320-950-0957

#### **Midway Apartments**

1224 Fourth Ave. South  
Brownton, MN 55312  
1 and 2 bedrooms  
Contact: 507-345-1290

#### **ERC Properties**

1 Unit  
Brownton, MN 55312  
Contact: Donald Padrnos  
320-328-5977

### **Glencoe**

#### **Beihoffer Apartments**

715 Greeley Avenue North  
FMHA financed  
Contact: John Korngiebel  
320-587-2486  
Market Rate: N  
Subsidized: Y

#### **Colonial Apartments**

1805 Tenth Street East  
Glencoe, MN 55336  
Contact: Mike Gavin  
320-864-5142  
Market Rate: Y  
Subsidized: N

#### **Parkview Apartments**

424 Second St. N  
Subsidized  
507-345-1290

#### **Shade Tree Retirement Center**

117 Fourth Ave. S  
Brownton, MN 55312  
1 bedroom units  
Congregate meals  
Contact: Ron Beltz  
320-328-5949

#### **East Court Apartments**

915 Stevens Ave. N  
Glencoe, MN 55336  
Mike Gavin  
320-864-5142  
Market Rate: Y  
Subsidized: N

#### **Orchard Estates**

1900 Ford Avenue North  
Glencoe, MN 55366  
Independent Senior Community  
Contact: Nancy Ellefson  
320-864-7798  
Market Rate: Y  
Subsidized: N

#### **Glenhurst Apartments**

515-803 Abby Lane  
Glencoe, MN 55336  
Contact: Sylvan Becker  
320-864-4393  
Market Rate: N  
Subsidized: Y

**Pryor Place Apartments**

1524 13<sup>th</sup> St E  
Glencoe, MN 55336  
Contact: Kenny Lengen  
952-466-5549  
Market Rate: Y  
Subsidized: NA

**Park Place**

2204 14<sup>th</sup> St E  
Glencoe, MN 55336  
Contact: 320-864-6575  
FMHA financed  
Contact: John Korngiebel  
320-587-2483  
Market Rate: N  
Subsidized: Y

**Union Heights Apartments**

2100 Ninth St. E  
Glencoe, MN 55336  
1 and 2 bedroom apartments  
Contact: Charlotte Klemen,  
952-442-4325  
Market Rate: Y  
Subsidized: N

**Imperial Townhouse  
Apartments**

427 15<sup>th</sup> St E  
Glencoe, MN 55336  
2 Bedroom units basement apts.  
Contact: Tom Dressel  
320-864-3629  
Market Rate: Y  
Subsidized: N

**Millie Beneke Manor**

1319 Greeley Avenue  
Glencoe, MN 55336  
Subsidized elderly units  
Contact: Marge Neubarth  
320-864-5282  
Market Rate: N  
Subsidized: y

**Morningside Meadows**

2505 E 11<sup>th</sup> St  
Glencoe, MN 55336  
Contact: Michael Gavin  
320-864-5124  
Market Rate: Y  
Subsidized: N

**West Court Apartments**

908 Russell Avenue North  
Glencoe, MN 55336  
Contact: Mike Gavin  
320-864-5142  
Market Rate: Y  
Subsidized: N

**Morningside II**

1206 Baldwin Avenue North  
Glencoe, MN 55336  
Contact: Michael Gavin  
320-864-5124  
Market Rate: Y  
Subsidized: N

**Town's Edge Estates**

1710 and 1720  
Newton Ave  
Oliver Management  
Contact: Janet Anderson  
320-864-6600

**Duplexes**

20<sup>th</sup> Street E  
801 and 803  
Glencoe, MN 55336  
Contact:  
Hazel Gruenwaldt  
320-864-3547

20<sup>th</sup> Street E  
805, 807  
Glencoe, MN 55336  
Contact:  
Richard Hayes  
320-864-5245

20<sup>th</sup> Street E  
513 13<sup>th</sup> St (4 plex)  
Glencoe, MN 55336  
Contact: Gordan Dahl  
320-864-3538

**Our House Board & Lodging**  
2018 10<sup>th</sup> St E  
Contact: Maddie Stark  
320-864-6613  
Fee: \$45/day or \$1350/Month  
Market Rate: Y  
Subsidized: N

## **Hutchinson**

**Alexander Apartments**  
415 Jefferson St. SE  
320-583-9389

**Fairlane Apartments**  
445 High NE  
320-234-7650

**Apollo Apartment**  
1065 Jefferson St. S  
320-583-6601

**Freemont Apartments**  
221 and 231 Freemont  
320-587-7368

**Century Court**  
715, 725, 750, 765, and 775  
Century Ave. N  
320-234-7243

**Gateway Central**  
11 Glen NE  
**Golfview Apartments**  
1165 Caroling  
320-286-4480

**Clinton Apartments**  
550 Clinton  
320-587-5458  
Subsidized

**HH & L**  
105 2<sup>nd</sup> Ave SW  
320-587-7368

**Colonial Apartments**  
345 Jefferson  
320-587-4754

**Heritage**  
965 Merrill  
320-587-7368

**Country Club Manor**  
765-815 School Road North  
320-587-8280

**Jefferson Court**  
435 Jefferson  
320-587-8358

**Edgewood**  
985 Echo Drive  
651-379-1584

**Johnson-Jefferson  
Apartments**  
970 Jefferson  
320-587-4837

**Evergreen Apartment**  
115 Jefferson St SE  
320-587-9432  
Elderly/Subsidized

**Leona Apartments**  
225 Echo Circle  
320-587-6336

**Luhman Building**

535 Jefferson  
320-587-7368

**Menards Apartments**

325 Jefferson  
320-587-8358

**North Place Apartments**

415 School Road N  
320-587-6336  
Subsidized

**Park Towers/HRA**

133 3<sup>rd</sup> Ave SW  
320-587-2168  
Elderly/Disabled

**Parkwood Apartments**

45 North High  
320-234-6995

**Park View Terrace**

213 4<sup>th</sup> Ave. NE  
320-587-4632

**Plaza One**

1215 Echo Circle

**Plaza Two**

1025 Echo Drive

**Plaza Three**

1025 Echo Drive

**Ridgedale Square  
Apartments**

715 Ridgedale Avenue NE  
320-234-7334 or 320-234-6997

**Regency Apartments**

235 Echo Circle  
320-587-7368

**Shamrock Eight**

955 Echo Drive  
320-587-8175

**River Ridge**

1095 Jefferson  
320-587-7771

**South Dale Apartments**

907 Dale Street  
320-587-8175

**Twin Oaks Town Homes**

1025 and 1035 Texas Ave  
320-587-7505

**Valley Vista**

215 4<sup>th</sup> Ave NE  
320-587-7610

**Monterey Terrace**

445 California  
320-587-7368

**Cedar Crest Estate (Assisted  
Living)**

225 Shady Ridge Road  
320-587-7077

**Olson Apts**

955 Jefferson  
320-583-9089

**Huski Townhouses**

860-920 Texas Avenue N  
320-234-6869

**Pleasant Acres**

255 Dr NW  
320-234-6019

**South Place**

1220 Bradford St  
320-587-6336

**Southview Terrace**

901 Hwy 15 S

**Twin Apartments**  
965-967 Jefferson St. S  
320-583-9089

**Verita Colonial**  
565 Jefferson St

**Lester Prairie**

**Intown Apartments**  
50 Second Ave S  
Contact: Sandra Fiecke  
320-395-2872

**Intown Apartments**  
83 Kennedy Ave  
Contact: Jim Parpart  
320-395-2619

**Meadow Lane Apartments**  
506/508 Second Ave. N  
FMHA financed

**Silver Lake**

**Lake Side Manor**  
127 Park Ave. SW  
Contact: Pearl Branden  
320-327-2536

**Uptown Apartments**  
301 North Center St  
Contacts: Dale and JoAnn Kautz  
320-327-2712

**Stewart**

**Stewart Apartments**  
Bowman Street  
Contact: Glynda Ballinger  
952-938-4452

**Olson**  
525 School Rd  
320-583-9089

**Village Estates 1 and 2**  
987-991 Echo Drive

**Ebent Apartments**  
464-468 Hwy 7 E  
320-587-5442

**Prairie Manor Apartments**  
Corner of Elm St. and 2<sup>nd</sup> Ave N  
FMHA Financed  
320-587-6336

**Lincoln Apartments**  
72 Lincoln Ave  
Contact: Philip Wagener  
PO Box 321  
St. Bonifacious, MN 55375

**McLeod HRA Townhomes**  
611-77 Central Ave  
Lester Prairie, MN 55354  
320-905-0957

**Village Apartments**  
104 SE Grove Ave  
Contact: Judy Blazinki  
320-327-2320

**McLeod HRA Townhomes**  
103 – 109 Grove Ave NE  
Contact: Jill Bengtson  
320-905-0957

**McLeod HRA Townhomes**  
721 N St.  
Contact: Jill Bengtson  
320-905-0957 Bowman Street

## **Winsted**

### **Juncewski Properties**

760 Main Ave W  
780 Main Ave W  
221 and 231 Baker Ave  
Contact: Len Juncewski  
320-485-4408

### **Neff Apartments**

150 5<sup>th</sup> St S  
Contact: James Neff  
320-485-2388 (home)  
320-485-3881 (office)

### **Northview Apartments**

561 6<sup>th</sup> St N  
Contact: Bob Bayerl  
320-485-4108

### **Westbriar Apartments**

301 Southshore Dr  
Contact: Alex Miles  
320-485-2328

### **Martison Apartments**

340 McLeod Ave W  
Winsted, MN 55395  
Contact: Merlin Martinson  
320-286-5555

### **Winsted Park Apartments**

241 Baker Ave East  
Contact: Provesco  
612-559-2128

### **Hagship Bank Apartments**

101 1<sup>st</sup> St N  
Contact: Jim Fowler  
320-485-3831

### **Haugdahl Apartments**

183 Main Avenue W  
Contact: Steve Haugdahl  
952-470-1102

### **Ridgedale Square Apartments**

P.O. Box #7

Additional information on rental properties may be available through the  
Heartland Community Action Agency.

## **Legal/Court Services**

### **Attorney Referral Service – Minnesota Bar Association**

Statewide referral to an attorney in the caller's county.

430 Marquette Ave. # 403  
Minneapolis, MN 55401  
612-333-1183  
800-292-4152  
612-333-1216 (TDD)



### **Centro Legal**

Low income, primarily Spanish speaking, intake is on Wednesday mornings. Sliding fee depending on income and family size. Civil legal services, translation of documents, interpreter services, Proyecto Justia (immigration, permanent residence, suspension of deportation, deferred action status, voluntary departure, political asylum, derivative citizenship, and naturalization), family law (child custody, spousal maintenance, support modification, legal termination of marriage), Proyecto Ayuda (legal services for Hispanic battered women).

2610 University Ave W # 450  
St. Paul, MN 55114  
651-642-1890

### **Fact Sheets**

[www.lawhelpmn.org](http://www.lawhelpmn.org)

### **Golden Tongue**

Court approved translating and interpreting services.

1322 E 13<sup>th</sup> St.  
Glencoe, MN 55336-1629  
320-864-3441

### **Legal Services Coalition**

Handbook – “Farmer’s Guide to FMHA”, as well as legal rights.

2324 University Ave W  
St. Paul, MN 55114  
651-228-9105



### **McLeod County Court Services**

Supervision of juveniles and adults convicted of misdemeanors and gross misdemeanors. Monitoring of child support order in McLeod County.

1805 Ford Ave. N. Suite 100  
Glencoe, MN 55336

Phone numbers:

- Glencoe 320-864-3144
- Hutchinson 320-587-9533
- Stewart & Winsted 800-247-1756

### **Office of the Minnesota Attorney General**

1400 Bremer Tower  
445 Minnesota Street  
St. Paul, MN 55101

Tel: (651) 296-3353 or 1-800-657-3787

### **Southern Minnesota Legal Services**

*Farm Family Law Project*

Legal assistance, information, and referrals to financially distressed family farmers.

*Legal Advocacy for Older Americans*

*Legal Aid*

Provide legal advice to low income people at no charge.

12 Civic Center Plaza, Suite 3000  
P.O. Box 3304  
Mankato, MN 56002-3304

507-387-5588  
507-387-2321 (fax)  
507-388-8462 (TDD)

800-247-2299 (clients only)  
888-575-2954 (new client intake)

**Tel-Law**

Library of 3-6 minute tape recordings of general legal information. Tapes on: Bankruptcy, landlord/tenant issues, criminal law, public benefits, domestic relations, credit and consumer law, estates and probate, and others.

612-752-6699

**Tenant Advocate Home Line**

612-728-5767  
866-866-3546

## **Public Libraries**

### **Pioneer Library System:**

Phone numbers:

- Brownton 320-328-5900
- Glencoe 320-964-3919
- Hutchinson 320-587-8908
- Winsted 320-485-3909



## **Medical Resources**

### **AIDS/HIV**

Counseling and Testing for AIDS virus antibody. No charge (donations may be requested). Call one of the following agencies to schedule an appointment.

**Audiological Evaluations-Glencoe Test Booth-507-537-2269 (free)**

### **St. Paul Division of Public Health**

Room 1111 Clinic  
555 Cedar St  
St. Paul, MN 55101  
651-266-1352

### **Home Care and Hospice**

Provide Home Care and Hospice. RN on call 24 hours at 320-234-5031.  
Accept Private Pay – Medicare – Medicaid.  
Office Hours: 8:00 a.m. – 5:00 p.m. Monday – Friday

### **Connect Care**

125 Main Street South  
Hutchinson, MN 55350  
320-234-5031  
320-234-5032  
[connect@hutchtel.net](mailto:connect@hutchtel.net)

### **McLeod County Public Health**

1805 Ford Ave. N, Suite 200  
Glencoe, MN 55336  
Phone numbers:

- Glencoe 320-864-3185
- Hutchinson 320-587-4680
- Lester Prairie/Winsted 320-395-2568
- Stewart 320-328-4413

### **HOME & COMMUNITY BASED SERVICES**

**Long Term Care Consultation Services** are provided in cooperation with McLeod County Social Services. An assessment is provided for clients prior to entry into a Nursing Home. All possible options for care are determined and presented to the patient and family before the client enters a Nursing Home. A screening may be requested when nursing home placement is being considered as an option for care.

**Case Management Services** are provided in cooperation with McLeod County Social Services to clients on Elderly Waiver (EW), Alternative Care (AC), Community Alternatives for Disabled Individuals (CADI),

No endorsement of services is being implied or promoted.

Community Alternative Care (CAC), Traumatic Brain Injury (TBI) Waiver and Prime West.

**Referral Services** are available, by a Public Health Nurse, to provide contact information for community resources and to assist with referral to home and community based services.

## **FAMILY HEALTH**

**Home and Office Visits** are provided by Public Health Nurses to offer health guidance, health teaching and counseling in an effort to improve the health of families, prevent disease and disability, and help families remain healthy. Examples of areas often covered include:

Child bearing and early infancy, Child Development and Parenting, Family Health, Disease prevention and control, Mental Health

**Improved Pregnancy Outcome** offers home visits by a public health nurse to pregnant women and their families. Information and counseling are provided in many areas to help women have a healthy baby. Pregnant women are assessed for preterm labor and other complications of pregnancy. Counseling on ways to prevent preterm labor and birth is stressed.

**Project Harmony** is a program for pregnant women and women with children up to age 5 who abuse alcohol and/or drugs. A team of a public health nurse, social worker, and chemical dependency counselor work to reduce barriers to sobriety and help women and families live alcohol and drug free.

**New Baby Visits** are available to all families with a newborn. Home visits by a public health nurse offer support to new parents and information on infant care, child growth and development and other helpful programs in the community. New mothers can get their baby weighted and questions answered.

**Breastfeeding Visits** are provided by a certified lactation counselor/nurse, either in the office or in your home. The nurse can help you with questions; help with positioning, latching, expressing milk, and help to monitor the baby's weight gain.

**Family Home Visitor** provides information, support and encouragement to families with children birth to five. Home visiting helps parents feel good about themselves, and their role as the first and foremost teacher of their children.

**The Family Planning Service** provides low cost birth control services. Through arrangements with area clinics, a physical exam, counseling and a number of birth control methods are included. Testing and treatment of some sexually transmitted diseases is also available.

### **Early Intervention Services for Infants and Preschoolers**

Provides assistance to families children who have (or may have) a developmental delay. A multi-disciplinary team, consisting of a public health nurse, an educator, and a social worker receive referrals, which are forwarded to the schools for free assessments and services.

***Follow Along Program*** is available for all children birth through 3 years. Questionnaires sent to parents every four months for parents to evaluate their child's physical, cognitive, language, and social-emotional development. They also receive information helpful to stimulate child development. No Fee.

***Child Passenger Safety Program*** provides a free one-hour class for parents on proper use of their child safety seat. The training includes information on the correct seat for the child, safely securing the child in the seat, and correct installation of the seat in the vehicle. Child safety seats are available for purchase, on a sliding fee basis at the training.

## **COMMUNITY HEALTH PROMOTION**

***Community Health Promotion***, a community approach to promoting health has always been a cornerstone of public health. "Public health is the service and art of 1) preventing disease 2) prolonging life and 3) promoting health and efficiency through organized community effort." It is based on current community needs and known health risks. Efforts are aimed at community development and coordination to effect healthy behavior.

***Health Education Programs*** can be provided to groups and organizations countywide per request. Topics may include: safety, health promotion topics, agency programs, HIV/AIDS and other communicable diseases.

***School Health***. Public Health services of screening, education, and consultation are available to all county schools through a contract arrangement.

***Blood Pressure*** clinics and education are offered on site businesses by special arrangement.

## **ENVIRONMENTAL HEALTH**

Private well water testing kits are available at our office. Well water testing is done at the Minnesota Valley Testing Laboratory in New Ulm. Well water samples are tested to ensure the safety of your home water supply.

Health related environmental complaints are received. A satisfactory solution to environmental problems is accomplished through consultation, education, referral, and/or negotiation.

## **CLINIC SERVICES**

Health screening clinics are available throughout the year in several county locations. Upcoming clinics are listed in local newspapers and on local radio stations.

***Foot Care Clinics*** are provided to seniors, age 55 and older, or under age 55 with a handicapping condition.

**Women, Infants, and Children (WIC) Clinic** is a supplemental food program for income eligible pregnant and breastfeeding women and children birth to 5 years. Nurses are at all WIC clinics and are available to provide information in the areas of nutrition and health. Appointments are made by contacting our WIC Office.

**Immunization Clinics** are available for county residents of all ages. No appointment is necessary. For children, a record of all previous immunizations must be brought along to the clinic. Clinics are held in Glencoe, 6 times a year. There is a fee for immunizations. These clinics are designed for low income families or families without other medical coverage for immunizations. If funds are unavailable, please contact the coordinator for free immunizations.

**Child and Teen Checkups** are available for all county children up to 21 years of age. This checkup includes height, weight, hearing, vision, nutrition, developmental screening, urine, and blood tests and a physical assessment. Arrangements for checkups can be made by contacting area clinics.

**Early Childhood Screening** is a required screening for kindergarten entry. This screening assesses height, weight, vision, hearing, and speech development. The above findings are reviewed with the parents plus nutrition, health, immunizations, dental, and family concerns. Appointments are made through your local school district.

**Healthy Teeth** is a fluoride varnishing program for young children to prevent tooth decay. Appointments can be made by calling the office. Phone numbers:

- Glencoe 320-864-3185
- Hutchinson 320-587-4680
- Lester Prairie/Winsted 320-395-2568
- Stewart 320-328-4413
- Fax Number 320-864-1484

### **MN Children with Special Health Needs**

MN Department of Health  
1400 E Lyon St  
Marshall, MN 56258  
507-537-7158  
State Information: 800-728-5420

**Hutchinson Area Health Care**  
1095 Highway 15 S.  
Hutchinson, MN 55350-5000  
320-234-5000  
1-800-454-3903

**Hutchinson Medical Center**

3 Century Ave SE  
Hutchinson, MN 55350  
320-587-2020  
1-800-944-2690

**Glencoe Regional Health Services**

1805 Hennepin Avenue  
Glencoe, MN 55336  
320-864-3121  
1-800-526-4242

**Meeker County Memorial Hospital**

612 Sibley Avenue  
Litchfield, MN 55335  
320-693-3242

**American Red Cross**

The American Red Cross is a humanitarian organization, led by volunteers, that provide relief to victims of disasters and helps people prevent, prepare for, and respond to emergencies. It does this through services that are consistent with its congressional charter and fundamental principles of the International Red Cross Movement.

**McLeod County Chapter**

P.O. Box 174  
Glencoe, MN 55336  
320-864-6466  
320-864-6350 (fax)



No endorsement of services is being implied or promoted.



## **Medical Payment Programs**

### **McLeod Social Service Center**

Pre-admission nursing home screening. Services under state waiver programs including community alternatives for disabled individuals, traumatic brain injury, community alternative care, mentally retarded/related conditions, and elderly waiver/alternative care. Eligibility determination for Medical Assistance and Minnesota Care. Eligibility guidelines apply.

1850 Ford Ave. N., Suite 100  
Glencoe, MN 55366

Phone numbers:

- Glencoe 320-864-3144
- Hutchinson 320-587-9533
- Stewart and Winsted 800-247-1756

### **Minnesota Care**

Health insurance plan for eligible children and adults; monthly premium based on income; some income guidelines. Covers: Well baby exams, outpatient doctor visits, dental care, prescription eyeglasses and vision care, prescription drugs, immunizations, and some hospitalization. Monthly premium based on income.

444 Lafayette Road  
St. Paul, MN 55155  
800-657-3672 (has messages in multiple languages)

### **Minnesota Migrant Health**

This program provides limited medical care to migrant farm workers who are ineligible for other state/Federal programs.  
State Office: 800-842-8693

## **McLeod County Dentists**

**Dr. Josh Campbell DDS**

2 Franklin St  
Hutchinson, MN 55350  
320-587-3993

**Dr. Daniel Carlson DDS**

720 Century Av SW  
Clock Tower Plaza  
Hutchinson, MN 55350  
320-587-3020

**Dr. Steve DeKoster DDS**

1126 Ives Ave N  
Glencoe, MN 55336  
320-864-3215

**Dr. John Gillard**

945 Echo Dr SE  
Hutchinson, MN 55350  
320-587-2769

**Dr. Sarah Heuer DDS**

20 Juniper St  
Lester Prairie, MN  
320-395-2323

**Dr. Thomas Inglis DDS**

45 Washington Ave E  
Hutchinson, MN 55350  
320-587-3502

**Dr. Kent Kuball**

10 Hassan St NE  
Hutchinson, MN 55350  
320-587-2726

**Dr. James Lobeck**

20288 HWY 15  
Hutchinson, MN 55350  
320-587-5504

**Dr. Thomas Lyke**

945 Echo Dr. SE  
Hutchinson, MN 55350  
320-587-2769

**Dr. Merrill Nelson**

1015 Greeley Ave N  
Glencoe, MN 55336  
320-864-3129

**Dr. Chuck Neufeld DDS**

45 3<sup>rd</sup> Ave Se  
Hutchinson, MN 55350  
320-587-6405

**Dr. Thomas Schoeneberger  
DDS**

1010 Greeley Ave  
Glencoe, MN 55336  
320-864-5128

**Dr. Ivan Streif DDS**

720 Century Ave SW  
Hutchinson, MN 55350  
320-587-4770

**Dr. Barbara Zajicek**

10 Hassan St NE  
Hutchinson, MN 55350  
320-587-2726

**Dr. Richard Carver DDS**

1406 Cedar Ave N  
Glencoe, MN 55336  
320-864-4206

**Dr. Michael Thoennes DDS**

131 Main Ave W  
Winsted, MN  
320-485-4344

**Dr. Steve Flinn DDS**  
107 1<sup>st</sup> Ave SW  
Hutchinson, MN 55350  
320-5872146

**Family and Cosmetic Gentle**  
Hutchinson Mall  
1060 Hwy 15 South #84  
Hutchinson, MN 55350  
320-234-6677

**Dr. Bill Dunbar**  
1126 Ives Ave N  
Glencoe, MN 55336

**Dr. James Nef DDS**  
123 Fairlawn Ave  
Winsted, MN  
320-485-3881

**Dr. Joseph Wang (Oral  
Surgery)**  
45 Washington Ave E  
Hutchinson, MN 55350  
320-587-4644

## **Dental Referrals**

### **Pediatric & Adolescent Dentistry**

204 Star St - Main Office, Mankato MN 56001 (507) 387-4078

OR 26 N Broadway, New Ulm MN 56073, (507) 354-8943

Takes MA Clients

Monday – Friday 8:00 a.m. 5:00 p.m.

### **Central Minnesota Pediatric Dentists PA**

1900 Centra Care Circle

Centra Care Health Plaza

Suite 0350

St. Cloud, MN 56303

320-253-0272

Monday

9:00 a.m. - 5:00 p.m.

Tuesday, Wednesday, and Thursday

8:00 a.m. - 5:00 p.m.

Friday

9:00 a.m. - 4:00 p.m.

### **Smile Center (ages 4 and up)**

13899 Highway 13 (Just north of County Road 42)

Savage, MN 55378

800-422-6904

952-440-2292

Monday – Friday

7:00 a.m. – 10:00 p.m.

Saturday & Sunday

8:00 a.m. – 5:00 p.m.

### **Rice Regional Dental Center**

A collaborative effort between Rice Memorial Hospital and the University of Minnesota School of Dentistry to provide dental care for under served patients in rural areas. The Dental Clinic is open to anyone, regardless of insurance status. All age groups are welcome and fees are determined on a sliding scale. Please contact us for more information on the clinic or to make an appointment:

email: [kcarl@rice.willmar.mn.us](mailto:kcarl@rice.willmar.mn.us)

320-214-2620

or toll-free: 1-877-214-2611

## **Chemical Dependency**

### **New Beginnings at Waverly**

A 28-day primary inpatient chemical dependency treatment program for adults, 18 and older and an adolescent inpatient chemical dependency treatment program for ages 13-17 and 18, if in high school. Chemical dependency evaluations. Both treatment programs have aftercare.

109 North Shore Drive  
Waverly, MN 55390  
800-487-8758

### **The Counseling Clinic of Winsted**

Chemical dependency evaluations. Primary outpatient chemical dependency treatment and aftercare.

551 4<sup>th</sup> St. N  
P.O. Box 905  
Winsted, MN 55395  
320-485-2323

### **Hutchinson Area Health Care**

Chemical dependency evaluations. Primary outpatient chemical dependency treatment and after care. Outpatient treatment provided for ages 15 and older.

1095 Highway 15 S  
Hutchinson, MN 55350  
320-234-4610

### **McLeod Social Service Center**

Chemical dependency assessments to determine eligibility for funding inpatient treatments, outpatient treatments, halfway housing, or extended care.

1805 Ford Ave N, Suite 100  
Glencoe, MN 55336

Phone numbers:

- Glencoe 320-864-3144
- Hutchinson 320-587-9533
- Stewart/Winsted 320-247-1756

**Total Compliance**

A resource for parents to obtain low cost Drug Urine Analysis.

320-864-4584

**New Ulm Medical Center**

A 28-day primary inpatient chemical dependency treatment program for adults, 18 and older. Aftercare.

**Chemical Dependency Unit**

1324 5<sup>th</sup> St. N

P.O. Box 577

New Ulm, MN

507-233-1000

**Project Harmony**

Services to pregnant women who use alcohol and/or drugs. Team of Public Health Nurse, Social Worker and Chemical Dependency Counselor assist pregnant women in reducing barriers to sobriety. No Fee. No Income Guidelines.

**McLeod Public Health**

1805 Ford Ave N, Suite 200

Glencoe, MN 55336

**Phone numbers:**

- Brownton/Glencoe/Silver Lake 320-864-3185
- Hutchinson 320-587-4680
- Winsted 320-395-2568
- Fax 320-864-1484

**Project Turnabout**

Among other programs, a culturally specific program for chemically dependent Latinos. Evaluation, treatment, and aftercare.

P.O. Box 116

Granite Falls, MN 56241

800-862-1453

**St. Cloud Hospital**

A 28-day intensive outpatient chemical dependency treatment program and in patient with sober housing. Aftercare.

Alcohol and Chemical Dependency Unit  
1406 6<sup>th</sup> Ave N  
St. Cloud, MN 56303  
800-835-6652

**Willmar Regional Treatment Center**

A 28-day primary inpatient chemical dependency treatment program for adults, 18 and older. 90-day extended inpatient treatment program. Mental illness/Chemical Dependency Program.

P.O. Box 1128  
Willmar, MN 56201  
320-231-5100

**MEADA (Methamphetamine Education and Drug Awareness)**

Free drug and alcohol presentations throughout McLeod County.

Contact Susan Suemnick 320-864-5591

## **Mental Health/Counseling Services**

**Individual, marital, family counseling, separation/divorce, stepfamily issues, pre-marriage counseling, self-esteem, anxiety, stress management, single parenting issues, depression, unplanned pregnancy, life transitions, sexuality, grief/loss, group therapy, consumer credit counseling, parenting.**

### **Dr. Mark Smith, PHD**

1091 Highway 15 S  
Hutchinson, MN 55350  
320-587-2939

### **Greater Minnesota Family Service**

P.O. Box 1810  
Willmar, MN 56201  
320-214-9692 Ext. 2

### **Hutchinson Area Health Care**

#### *Crisis Services*

Helpline available 24-hours a day, in person or by telephone (collect calls accepted).

320-587-5502

#### *Inpatient Care*

Unit activities, group therapy, occupational therapy, individual therapy.

320-234-4600

#### *Mental Health/Medication Management*

Individual, family, DBT, and group therapy. Day or evening hours available. For more information call the number below. Sliding fee available for eligible individuals.

320-234-4610

### **Jonas Center**

925 12<sup>th</sup> St. E  
Glencoe, MN 55336  
320-864-6139 or 952-361-9700  
320-864-6130 (fax)



**Lighthouse Counseling**

P.O. Box 655  
Hutchinson, MN 55350  
320-234-7100  
800-939-7164  
[lighthousecounseling@juno.com](mailto:lighthousecounseling@juno.com)

**Lutheran Social Services**

Faith Lutheran Church  
335 Main St. South  
Hutchinson, MN 55350  
320-587-2093

**McLeod County Public Health**

Home visits to parents with children having mental health problems, early identification and intervention for emotional and behavioral problems. Visits for adults with a doctor's order for mental health assessment and medical monitoring.

1805 Ford Avenue, North, Suite 200  
Glencoe, MN 55336  
Phone numbers:

- Glencoe 320-864-3185
- Hutchinson 320-587-4680
- Lester Prairie/Winsted 320-395-2568
- Stewart 320-328-4413
- Fax Number 320-864-1484

**McLeod Social Service Center**

Mental health case management, early intervention, crisis assistance, family community support services, children day treatment, professional intensive in-home therapy, and medication monitoring.  
Sliding fee for respite care for children with severe emotional disturbances.

1805 Ford Avenue, North, Suite 100  
Glencoe, MN 55336  
Phone numbers:

- Glencoe 320-864-3144
- Hutchinson 320-587-9533
- Stewart/Winsted 320-247-1756

## Support Groups

### Alcoholic Anonymous, Narcotics Anonymous, Alanon and Adult and Adult Children of Alcoholics

Alcoholic Anonymous (AA) and Narcotics Anonymous (NA) are fellowships of men and women who share their experience, strength and hope with each other so that they may solve their common problem and help others recover from narcotics and alcoholism.

Alanon is a support group for the families of an alcoholic.

Adult Children of Alcoholics (ACA) is a support group for those whose parents abused alcohol.

#### **Arlington Group**

<b>Day/Time</b>	<b>Location</b>	<b>Contact</b>
AA Monday/8:00 p.m.	St. Mary's Church	Ken, 320-238-2370
Alanon Monday/8:00 p.m.	St. Mary's Church	Myra, 320-238-2370

#### **Lester Prairie Group**

<b>Day/Time</b>	<b>Location</b>	<b>Contact</b>
AA Tuesday/8:00 p.m.	City Hall	Joan, 320-864-6026

#### **Winsted Group**

<b>Day/Time</b>	<b>Location</b>	<b>Contact</b>
AA Monday/8:00 p.m.	St. Mary's Care Center	Gerald, 320-485-2245
NA Wednesday/7:30 p.m.	Holly Trinity Church	Gerald, 320-485-2245
Alanon Wednesday/7:00 p.m.	Distinctive Dental	Gerald, 320-485-2245

### **Autism Support Group**

1<sup>st</sup> and 2<sup>nd</sup> Tuesday of each month

Christ the King Lutheran Church

1040 South Grade Road SW

Hutchinson, MN 55350

7:00 – 8:30 p.m.

Contact: Carmen Cameron

[autism.support@hotmail.com](mailto:autism.support@hotmail.com)

### Hutchinson Area Health Care Support Groups

#### **Breast Cancer Support Group**

2<sup>nd</sup> Tuesday of each month

7:00 – 8:30 p.m.

Faith Lutheran Church (East Entrance)

Contact: Renee Wetterling

320-587-6701

**Baby and Me Breastfeeding Support Group**

2<sup>nd</sup> Tuesday of each month

12:30 – 2:00 p.m.

HAHC, Conference Room A/B

Or

4<sup>th</sup> Tuesday of each month

10:00 – 11:30 a.m.

Glencoe Regional Health

Conference Room A

Contact: Lisa Hansen

320-234-4749

**Cardiac and Diabetes Support Group**

1<sup>st</sup> Thursday of each month excluding June/July.

Time varies from 1:30 – 3:00 p.m. or 6:00 – 7:30 p.m.

HAHC, Conference Room A/B

Contact: Lisa Elfering

320-234-5151

**Caregivers of Children with Diabetes Support Group**

2<sup>nd</sup> Monday every other month starting in September

6:30 – 7:30 p.m.

HAHC, Conference Room A/B

Contact: Lisa Elfering

320-234-5151

**Adult and Grief Support Group**

Offered Spring and Fall – one time a week for 7 weeks.

Contact: Mary Nelson

320-234-4738

**McLeod Alliance for Victims of Domestic Violence, Inc.**

Support group for victims of domestic violence. – “Voices”, support for children who have witnessed domestic violence.

**P.O. Box 393**

**101 Main St S, Suite 201**

Hutchinson, MN 55350

800-934-0851 or 320-234-7933

**A Special Time for Special Moms**-Mothers of Children with Special Needs reach out to one another. Meetings are the first Monday of each Month. Contact Heidi Pulkrabek-320-587-7112

**ARC McLeod**

Information and support for parents of children and adults with developmental disabilities and other special needs. For further information regarding McLeod County resources, services and when support meetings are held, contact the ARC Central Office.

Bev Kahler  
6112 322<sup>nd</sup> Street  
St. Cloud, MN 56303  
800-775-3196 or 320-240-9550

**Fibromyalgia Support Group**

Information and support.

Contact: Dorie Buck  
320-587-4673

**Grief Recovery Friends**

Offers new strength, comfort and friendship to those who have experienced the death of a loved one. Meets the second Wednesday of each month at 7:30 p.m. at Oakland Chapel.

Contacts: Dan and JoAnne  
320-5874436  
Mike and Pam  
320-587-6458  
Robert Hantge  
320-587-2128

**McLeod County Family Support-Family Forums Offered Through-out the Year**

Contact: Donna Cooper-320-234-2619 or Linda Senst-320-864-1403

**McLeod County NAMI**

Support group for mentally ill persons. Meets the first Tuesday of the month at 7:00 p.m. in the Fireside Room.

**Congregational-UCC Church**

31 4<sup>th</sup> Avenue SW  
Hutchinson, MN 55350  
Contact: Gail Johnson  
320-275-2912

**Mothers of Multiples**

Support group for mothers of twins, triplets and more. Yearly fees \$15.00. Meets monthly in Waconia.

Contact: Gladys Kirsch  
320-864-1344

No endorsement of services is being implied or promoted.

**Parent Connection**

Parent support group with trained facilitators and a structured childcare program. No charge. Monday evenings from 6:30 – 8:00 for parents of children birth – preteen, and 8:00 – 9:30 for parents of adolescents.

Christ the King Lutheran Church  
1040 South Grade Road SW  
Hutchinson, MN 55350  
320-587-8639

**Parenting Website**

[www.MNParentsKnow.info](http://www.MNParentsKnow.info) Parenting resources, information, and activities to help your child learn and develop.

**TOPS**

Weight loss support group. Meets Mondays at 7:00 p.m. (weigh-in begins at 6:20 p.m.) and/or Thursdays at 9:00 a.m. (weigh-in begins at 8:00 a.m.)

Bethlehem United Methodist Church  
655 Miller Avenue  
Hutchinson, MN 55350

Contact: 320-587-8155 or 320-587-8762 for further information.

## **Support Services**

### **Parent Liaison/Advocate**

Support for families in dealing with multiple service agencies.

Heartland Community Action Agency

320-587-5244

800-829-2132

### **Lion's Club**

May pay for eye examinations, eye glasses and other optical needs.  
Referral through community agencies.

**McLeod County Interagency Early Intervention Committee (IEIC)**-coordinates services for young children Birth through 5 with Special needs. Contact Deb McKittrick: 320-234-2623

### **McLeod County Public Health**

Infant car seat rental information. Free convertible seats to income eligible families when available.

1805 Ford Ave. N, Suite 200

Phone numbers:

- Glencoe 320-864-3185
- Hutchinson 320-587-4680
- Lester Prairie/Winsted 320-395-2568
- Stewart 320-328-4413

### **McLeod Social Service Center**

Assistance with payment of recreational activities, obtaining a mentor, and respite care for children with severe emotional disturbances. Summer day camp (one week) for children 7-11. Assistance in obtaining school supplies and Christmas gifts for children.

1805 Ford Ave. N, Suite 100

Phone numbers:

- Glencoe 320-864-3144
- Hutchinson 320-587-9533
- Stewart/Winsted 320-247-1756

### **3M CARES Group**

Provides volunteers for non-profit efforts in Hutchinson. Office Hours are 8:00 a.m. – 12:00 noon.

905 Adams St SE

Hutchinson, MN 55350

320-234-2000

**McLeod Treatment Programs, Inc. – Visitation/Exchange Center**

Provides monitored visits and/or visitation exchanges of children between parents. Available to all families. Monday and Wednesday, 4:00 p.m. – 6:00 p.m., Friday, 4:00 p.m. – 8:00 p.m., Saturday and Sunday, 8:00 a.m. – 12:00 noon and 4:00 p.m. – 8:00 p.m. By appointment only. Fees apply sliding fee available.

1065 5<sup>th</sup> Ave. SE  
P.O. Box 364  
Hutchinson, MN 55350  
320-587-9790  
320-587-3767 (fax)

**Foundation for Challenged Children**

Financial assistance in obtaining special needs equipment that is not approved by government programs.

Roger Mackendanz  
16108 720<sup>th</sup> Avenue  
Dassel, MN 55325  
320-587-7872

**PACER CENTER**

PACER Center is a Minnesota nonprofit organization that provides information to Minnesota families of children with **all** disabilities. Most PACER services are provided free of charge to Minnesota families. PACER receives funding from a variety of government, foundation, and private sources.

Regular office hours are 8:00 am – 5:00 pm CST.

Phone: 952-838-9000

**Common Cup Ministries**

A combined outreach ministry of Hutchinson Churches to provide help for those who fall through the cracks of other assistance. Limited funds are available for food, lodging, and other necessities (transportation, telephone, electricity, clothing, fuel and holiday vouchers, etc.) 218 Main Street South  
Suite 100  
Hutchinson, MN 55350  
Phone: 320-587-2213

First Lutheran Church  
925 13th St. E., Glencoe, MN 55336  
320-864-5511- **by appointment only**

No endorsement of services is being implied or promoted.

## **Churches**

### **Brownton**

Grace Lutheran  
8638 Plum Avenue  
320-328-5533

Immanuel Lutheran  
700 Division Street  
320-328-5522

Prairie Community  
700 First Avenue N  
320-395-2320

St. Matthew's Lutheran  
16104 20<sup>th</sup> Street  
320-328 -5773

### **Glencoe**

Berean Baptist  
727 East 16<sup>th</sup> Street  
320-864-6113

Christ Lutheran  
1820 North Knight Avenue  
320-864-4549

First Congregational UCC  
1400 North Elliott Avenue  
320-864-3855

First Evangelical Lutheran  
925 13<sup>th</sup> Street E  
320-864-5522

Good Shepherd Lutheran  
1407 Cedar Avenue  
320-864-6157

Peace United Church of Christ  
520 East 11<sup>th</sup> Street  
320-864-4556

St. John's Evangelical Lutheran  
4505 80<sup>th</sup> Street  
320-864-3093

St. Pius X Catholic  
1103 10<sup>th</sup> Street E  
320-864-5162

### **Hutchinson**

Apostolic Lighthouse  
560 Adams Street SE  
320-587-0867

Bethlehem United Methodist  
655 Miller Avenue  
320-587-3312

Christ the King Lutheran  
PO Box 369  
1040 South Grade Road SW  
320-587-2276

Church of Jesus Christ of Later Day  
Saints  
770 School Road NW  
320-587-5665

Faith Lutheran  
335 Main Street South  
320-587-2093



First Congregational United Church of Christ  
31 4<sup>th</sup> Avenue SW  
320-587-2125

Grace Lutheran  
430 5<sup>th</sup> Avenue SW  
320-587-3051

Hunters Ridge Community  
850 School Road SW  
320-587-8374

Hutchinson Evangelical Free  
990 5<sup>th</sup> Avenue SE  
320-234-5979

Immanuel Evangelical Lutheran  
20882 Walden Avenue  
320-587-4857

Jehovah's Witness  
1201 School Road  
320-587-8347

Oak Heights Covenant  
1398 South Grade Road  
320-587-8483

Our Savior's Lutheran  
800 Bluff Street  
320-587-3318

### **Lester Prairie**

Bethel American Lutheran  
77 Lincoln Avenue  
320-395-2125

Evangelical United Church of Christ  
700 1<sup>st</sup> Avenue N  
320-395-2320

Peace Lutheran  
400 Franklin Street SW  
320-587-1162

Riverside Assembly of God  
20924 State Highway 7 W  
320-587-2974

St. Anastasia Catholic  
460 Lake Street SW  
320-234-6129

Seventh Day Adventist  
820 Main Street North  
320-587-6054

Shalom Baptist  
1215 Roberts Road SW  
PO Box 324  
320-587-2668

Shepherd's Fold Baptist  
705 5<sup>th</sup> Avenue SW  
320-234-3794

Vineyard United Methodist  
PO Box 484  
1395 South Grade Road  
320-587 2200

Word of Life Outreach Center  
950 School Road SW  
320-587-9443

St. Paul's Lutheran  
124 Maple Street N  
320-395-2573

St. Peter's Lutheran  
90 Kennedy Avenue  
320-395-2029

**Plato**

Lighthouse Assembly of God  
10478 Bell Avenue  
320-238-2181

St. John's Lutheran  
216 McLeod Avenue N  
320-238-2338

St. Paul's United Church of Christ  
308 First Street NE  
320-238-2206

**Silver Lake**

Church of the Holy Family  
720 Main Street W  
PO Box 326  
320-327-2261

Faith Presbyterian  
108 West Main Street  
PO Box 307  
320-327-2452

Grace Bible  
300 Cleveland Street  
PO Box 267  
320-327-2352

**Stewart**

St. Boniface Catholic  
PO Box 202  
551 Main Street  
320-562-2352

St. Matthew's Lutheran  
2402 County Road 7  
320-562-2647

St. Paul's American Lutheran  
300 Croyden Street  
320-562-2352

**Winsted**

Holy Trinity Catholic  
111 West Winsted Avenue  
320-485-4421

St. John's Lutheran  
410 North First Street  
320-485-2522

## Camps

### **Brainerd Teen Adult Retreat “Life in the FASlane”**

At Camp Confidence in northern MN for those with the diagnosis of FASD.

### **MOFAS (MN Organization on Fetal Alcohol Syndrome)**

1885 University Avenue

Suite 395

St. Paul, MN 55104

651-917-2370 or 1-866-90-MOFAS (66327) [www.mofas.org](http://www.mofas.org)

### **Camp Buckskin**

Serving boys and girls ages 6-18 with diagnosis of ADHD/ADD and/or learning disabilities.

PO Box 389

Ely, MN 55371

218-365-2121

#### Winter:

8100 Wayzata Blvd

Golden Valley, MN 55426

[www.campbuckskin.com](http://www.campbuckskin.com)

### **Camp Courage and Courage North**

Courage Center operates two camps: *Courage* near Maple Lake and *Courage North* near Bemidji.

- Courage camp ages 7 and older for physically disabled or non-developmentally delayed; 7-13 communications disorders; and kids with cancer, asthma or sickle cell anemia.
- Courage North ages 7-17 who are deaf or hard of hearing, hemophilia or recovering from severe burns.

3915 Golden Valley Road

Golden Valley, MN 55422

763-520-0504 or 866-520-0504

[www.couragecamps.org](http://www.couragecamps.org)

**Camp Discovery/Courage North** – Lake George, MN

Residential camp for children and young adults with high functioning Autism/Asperger Syndrome.

Autism Society of MN  
2380 Wycliff Street #102  
St. Paul, MN 55114  
651-647-1083  
<http://www.ausm.org/>

**FASD Family Retreat**

Southern Minnesota  
Camp Omega  
22750 Lind Avenue  
Waterville, MN 56096  
507-327-0706  
[www.mofas.org](http://www.mofas.org)

**Camp Friendship**

Traditional and specialty resident camp, year round respite care for persons with or without disabilities.

Friendship Ventures  
10509 108<sup>th</sup> Street NW  
Annandale, MN 55302  
320-274-8376 , 952-852-0101, or 800-450-8376  
[www.friendshipventures.org](http://www.friendshipventures.org)

**Camp Hand-In-Hand**

For individuals who have autism or PDD (Pervasive Developmental Disorders).

Autism Society of MN  
2380 Wycliff Street  
Suite 102  
St. Paul, MN 55114  
651-657-1083 ext 16  
<http://www.ausm.org/>

**Camp Knutson**

For children and adults that are emotionally disturbed, mentally handicapped, hearing impaired or chemically dependent.

11169 White Fish Avenue  
Cross Lake, MN 56442  
218-543-4232  
[www.campknutson.org](http://www.campknutson.org)

No endorsement of services is being implied or promoted.

**Camp Needlepoint/Daypoint**

Residential and day camps for children with diabetes at Camp St. Croix at Hudson, WI.

American Diabetes Association  
Parkdale Center  
6100 Gamble Drive  
Suite 394  
St. Louis Park, MN 55416  
763-593-5333 ext. 6596  
1-800-DIABETES  
<http://diabetes.org>

**Camp Oz**

For children with epilepsy located at YMCA Camp Ihduhapi in Loretto, MN

Epilepsy Foundation of Minnesota  
1600 W. University Avenue, Suite 205  
St. Paul, MN 55104  
651-287-2310 or toll-free 1-800-779-0777  
[www.efmn.org](http://www.efmn.org)

**Camp We No Wheeze Central**

Overnight camp for children on daily preventative asthma medication at Camp Courage in Maple Lake, MN. Operated by the American Lung Association of MN.

1511 Northway Drive, #101  
St. Cloud, MN 55303  
320-654-8266 ext. 24  
[www.alamn.org](http://www.alamn.org)

**Creative Options Respite Care Services**

Offered at Camp Friendship and Eden Wood Center. Program lets the individual relax and re-energize while family or care provider enjoys a break from the daily demands of caring for a person with special needs.

10509 108<sup>th</sup> Street NW  
Annandale, MN 55302  
952-852-0101 or toll-free 800-450-8276  
[www.friendshipventures.org](http://www.friendshipventures.org)

### **Friendship Ventures**

Children and adults with mental retardation and other development disabilities.

10509 108<sup>th</sup> Street NW  
Annandale, MN 55302  
952-852-0101 or  
800-450-8276  
[www.friendshipventures.org](http://www.friendshipventures.org)

### **Opportunities Partners' Career Camp**

Students with disabilities explore the world of work and develop skills for success. Developmental disabilities, brain injury, autism age 16-21

952-938-5511  
[www.opportunitiespartners.org](http://www.opportunitiespartners.org)

### **Ridgewater Summer Camp**

It is never too early to think about the future! All children students who have completed grades 5<sup>th</sup> – 8<sup>th</sup> grade are invited to attend the Ridgewater College Summer Camp. Campers will learn about future career possibilities and programs offered at Ridgewater College as well as other colleges. Through hands-on, interactive classes and team building activities, students will be given the opportunity to expand their minds and become excited about the future. Affordable participation fee - some scholarships available.

Contact: Tari Niemeyer  
320-234-8540  
[tari.niemeyer@ridgewater.edu](mailto:tari.niemeyer@ridgewater.edu)

**Other camps may be available during the summer. For further information, call McLeod County Social Service Center.**

- **Glencoe** 320-864-3144
- **Hutchinson** 320-587-9533
- **Stewart and Winsted** 800-247-1756

## **Clubs**

### **4-H**

University of MN Extension Service-McLeod County  
840 Century Avenue  
Hutchinson, MN 55350-3754  
320-587-0770 or 800-587-0770  
320-234-4310 (fax)  
e-mail: [mcleodnextension.umn.edu](mailto:mcleodnextension.umn.edu)

### **Boy Scouts**

Joel Gunderson (Referral source for all of McLeod County)  
Phone: 320-587-8977

### **Girl Scouts**

Peacepipe Girl Scout Council  
800-332-4475

Jeanne Reynolds , Local Service Manager  
320-587-3998

### **Community Education**

Recreational and other activities for children and families. Contact your local community education office at:

- Glencoe/Silver Lake 320-864-2698
- Hutchinson 320-587-2975
- Lester Prairie 320-395-2613
- Winsted 320-562-2110

**For additional youth activities, contact your local church or consult your local newspaper.**

No endorsement of services is being implied or promoted.



No endorsement of services is being implied or promoted.

**The McLeod County Resource Directory has  
been developed through support  
with the following:**



**MCLEOD FAMILY  
CONNECTION**  
FAMILY SERVICE COLLABORATIVE OF MCLEOD



SOUTHWEST INITIATIVE  
FOUNDATION



*Promoting the Healthy Social and Emotional  
Development of Our Youngest Children*  
MINNESOTA INITIATIVE FOUNDATIONS

No endorsement of services is being implied or promoted.